

Halohasta litorea gen. nov. sp. nov., and *Halohasta litchfieldiae* sp. nov., isolated from the Daliang aquaculture farm, China and from Deep Lake, Antarctica, respectively

Yun-Zhuang Mou · Xing-Xing Qiu ·
Mei-Lin Zhao · Heng-Lin Cui · Dickson Oh ·
Mike L. Dyll-Smith

Received: 17 August 2012 / Accepted: 20 September 2012 / Published online: 30 September 2012
© Springer Japan 2012

Abstract Two halophilic archaeal strains, R30^T and tADL^T, were isolated from an aquaculture farm in Dailing, China, and from Deep Lake, Antarctica, respectively. Both have rod-shaped cells that lyse in distilled water, stain Gram-negative and form red-pigmented colonies. They are neutrophilic, require >120 g/l NaCl and 48–67 g/l MgCl₂ for growth but differ in their optimum growth temperatures (30 °C, tADL^T vs. 40 °C, R30^T). The major polar lipids were typical for members of the *Archaea* but also included a major glycolipid chromatographically identical to sulfated mannosyl glucosyl diether (S-DGD-1). The 16S rRNA gene sequences of the two strains are 97.4 % identical, show most similarity to genes of the family *Halobacteriaceae*, and cluster together as a distinct clade in phylogenetic tree reconstructions. The *rpoB*' gene similarity between strains R30^T and tADL^T is 92.9 % and less to other halobacteria. Their DNA G + C contents are

62.4–62.9 mol % but DNA–DNA hybridization gives a relatedness of only 44 %. Based on phenotypic, chemotaxonomic and phylogenetic properties, we describe two new species of a novel genus, represented by strain R30^T (= CGMCC 1.10593^T = JCM 17270^T) and strain tADL^T (= JCM 15066^T = DSMZ 22187^T) for which we propose the names *Halohasta litorea* gen. nov., sp. nov. and *Halohasta litchfieldiae* sp. nov., respectively.

Keywords *Halohasta litorea* gen. nov., sp. nov. · *Halohasta litchfieldiae* sp. nov. · Halophilic archaea · Deep Lake · Marine solar saltern

Introduction

Artificial and natural hypersaline environments, such as marine solar salterns and salt lakes with salt concentrations exceeding 150–200 g/l, are common habitats for halophilic archaea, members of the family *Halobacteriaceae* within the order *Halobacteriales* (Oren 2006). In the last 3 years, many new isolates representing novel taxa have been isolated and described from such habitats all over the world, such as *Halonotius pteroides* from an Australian solar saltern (Burns et al. 2010), *Halogramma rubrum*, *Halorussus rarus*, *Halolamina pelagica* and *Halorubellus salinus*, all five from Chinese solar salterns (Cui et al. 2010a, b, 2011a, 2012), and *Haloarchaeobius iranensis* and *Halovenus aranensis* from an Iranian salt lake (Makhdomi-Kakhki et al. 2012a, b). This rapid expansion in new taxa indicates that the members of family *Halobacteriaceae* are more diverse than was previously recognized.

During our surveys on halophilic archaeal diversity of marine solar salterns of Eastern China and Deep Lake, Antarctica, two haloarchaeal strains, R30^T and tADL^T,

Communicated by A. Oren.

Electronic supplementary material The online version of this article (doi:10.1007/s00792-012-0485-5) contains supplementary material, which is available to authorized users.

Y.-Z. Mou · X.-X. Qiu · M.-L. Zhao · H.-L. Cui (✉)
School of Food and Biological Engineering, Jiangsu University,
301 Xuefu Road, Jingkou District, Zhenjiang 212013,
People's Republic of China
e-mail: cuihenglin@ujs.edu.cn

D. Oh
5/9 Waterman Terrace, Mitchell Park, Adelaide,
SA 5043, Australia

M. L. Dyll-Smith (✉)
School of Biomedical Sciences, Charles Sturt University,
Boorooma Street, Wagga Wagga, NSW 2678, Australia
e-mail: mike.dyallsmith@gmail.com

were recovered. In this study, we characterize these two strains and propose that they represent two novel species of a novel genus, *Halohasta*.

Materials and methods

Isolation and cultivation of halophilic archaeal strains

Strain R30^T was isolated from a brine sample taken from an aquaculture farm at Daliang, Liaoning Province, China (38°55'57"N, 121°12'25"E; elevation, sea level) and stored at 4 °C during transport to the laboratory in 2009. The pH of the brine was 7.5, and the specific gravity 1.21. Strain tADL^T was isolated from a surface water sample taken in late 2006 from Deep Lake, Antarctica (68°33'35.6"S, 78°11'44.9"E; elevation, 50 m below sea level) and stored at 4 °C during transport to the laboratory in 2007. The pH of the water was 7.1, and the specific gravity 1.17.

For strain R30, the neutral oligotrophic haloarchaeal medium (NOM) was used for the isolation procedure, and contained the following ingredients (g/L): yeast extract (Oxoid) 0.05, fish peptone (Sinopharm Chemical Reagent Co., Ltd.) 0.25, sodium pyruvate 1.0, KCl 5.4, K₂HPO₄ 0.3, CaCl₂ 0.25, NH₄Cl 0.25, MgSO₄·7H₂O 26.8, MgCl₂·6H₂O 23.0, NaCl 184.0 (pH adjusted to 7.0–7.2 with 1 M NaOH solution). The medium was solidified with 2.0 % agar. The strain was routinely grown aerobically at 37 °C in NOM-3 medium (NOM series medium) with the following modifications (g/L): yeast extract 1.0, fish peptone 0.25, sodium formate 0.25, sodium acetate 0.25, sodium lactate 0.25 and sodium pyruvate 0.25. For the isolation of tADL^T, the liquid end-point dilution method (as described by Burns et al. 2004) was used, with DBCM2 medium (Dyall-Smith 2009).

Phenotypic determination

Phenotypic tests were performed for all species in the same basic medium, NOM, according to the proposed minimal standards for description of new taxa in the order *Halobacteriales* (Oren et al. 1997). The type strains *Halonotius pteroides* 1.15.5^T and *Haloferax volcanii* CGMCC 1.2150^T were selected as reference strains, and used in all tests. The Gram stain was performed following the method outlined by Dussault (1955). Cell morphology and motility in exponentially growing liquid cultures were examined using a Nikon microscope equipped with phase-contrast optics (model: E400). The minimum salt concentration preventing cell lysis was determined by suspending washed cells in serial sterile saline solutions containing NaCl ranging from 0 to 150 g/L and the stability of the cells was detected by light microscopic examination. Growth and gas formation

with nitrate as an electron acceptor were tested in 9-ml stoppered tubes (with Durham tubes) completely filled with liquid NOM medium, and to which NaNO₃ (5 g/L) had been added. The formation of gas from nitrate was detected by the presence of gas bubbles in Durham tubes, and the formation of nitrite was monitored colorimetrically. Anaerobic growth in the presence of L-arginine or DMSO (5 g/L) was tested in completely filled 9-ml stoppered tubes. Starch hydrolysis was determined on NOM agar plates supplemented with 2 g/L soluble starch, and detected by flooding the plates with Lugol's iodine solution. Gelatin hydrolysis was performed by growing colonies on NOM agar plates amended with 5 g/L gelatin, and detected by flooding the plates with Frazier's reagent (McDade and Weaver 1959). Esterase activity was measured as outlined by Gutiérrez and González (1972). Tests for catalase and oxidase activities were performed as described by González et al. (1978). Production of H₂S was tested by growing the isolates and reference strains in a tube containing NOM liquid medium supplemented with 5 g/L sodium thiosulfate, and detected using a filter-paper strip impregnated with lead acetate (Cui et al. 2007). To test for growth on single carbon sources, fish peptone and sodium pyruvate were omitted from the NOM medium, and the compound to be tested was added at a concentration of 5 g/L. Antimicrobial susceptibilities were determined by the Gutiérrez et al. (2008) methods on NOM agar plates with antimicrobial compound discs.

Chemotaxonomic characterization

Polar lipids were extracted using a chloroform/methanol system and analysed using one- and two-dimensional TLC, as described previously (Cui et al. 2010b). Merck silica gel 60 F₂₅₄ aluminium-backed thin-layer plates were used for TLC analyses. In two-dimensional TLC, the first solvent was chloroform–methanol–water (65:25:4, by vol.) and the second solvent was chloroform–methanol–acetic acid–water (80:12:15:4, by vol.). The latter solvent mixture was also used in one-dimensional TLC. Two specific detection spray reagents were used; phosphate strain reagent for phospholipids and α -naphthol strain for glycolipids. The general detection reagent, sulfuric acid–ethanol (1:2, by vol.), was also used to detect total polar lipids.

Phylogenetic analysis

Genomic DNA from halophilic archaeal strains was prepared as described previously (Cui et al. 2011b). The 16S rRNA genes were amplified, cloned and sequenced according to the protocol described previously (Cui et al. 2009). PCR-mediated amplification and sequencing of the *rpoB'* genes were carried out according to Minegishi et al.

(2010). Multiple sequence alignments were performed using the ClustalW program integrated in the MEGA 5 software (<http://www.megasoftware.net/>). Phylogenetic trees were reconstructed using Neighbour-Joining, Maximum-Parsimony and Maximum-Likelihood algorithms in the MEGA 5 software (Tamura et al. 2011). Gene sequence similarity among halophilic archaea was calculated using the Pairwise-Distance computing function of MEGA 5. The DNA G + C content was determined from the mid-point value (T_m) of the thermal denaturation method (Marmur and Doty 1962) at 260 nm with a Beckman-Coulter DU800TM spectrophotometer equipped with a high-performance temperature controller. The type strain *Halomicrobium mukohataei* JCM 9738^T was selected as reference strain for these analyses, and the formula $G + C \text{ mol \%} = \frac{(T_m \text{ unknown strain} - T_m \text{ reference strain})}{2.08} + \frac{G + C \text{ mol \% reference strain}}{2}$ was used to calculate the G + C content from the known T_m value (Owen and Pitcher 1985). DNA–DNA hybridizations were performed in a Beckman-Coulter DU800TM spectrophotometer equipped with a high performance temperature controller, and were carried out according to the thermal denaturation and renaturation method of De Ley et al. (1970), as modified by Huß et al. (1983). DNA–DNA hybridizations were carried out in 2 × SSC at 81 °C and each determination was carried out in triplicate.

Results and discussion

Cells of strains R30^T and tADL^T were motile and rod-shaped when grown in NOM-3 liquid medium (Supplementary Fig. S1). They stained Gram-negative and their colonies were red-pigmented. Strain R30^T was able to grow at 25–50 °C (optimum 40 °C), in the presence of 120–280 g/l NaCl (optimum 150 g/l NaCl), with 0–95 g/l MgCl₂ (optimum 66.5 g/l MgCl₂) and at pH 5.5–9.0 (optimum pH 7.0), while strain tADL^T was able to grow at 25–45 °C (optimum 30 °C), in the presence of 150–250 g/l NaCl (optimum 180 g/l NaCl), with 0–95 g/l MgCl₂ (optimum 47.5 g/l MgCl₂) and at pH 6.0–8.0 (optimum pH 7.5). The cells of both isolates lyse in distilled water and the minimum NaCl concentrations that prevented cell lysis were 120 g/l for strain R30^T and 150 g/l for strain tADL^T. Both strains produced H₂S from sodium thiosulfate, did not hydrolyze Tween 80, gelatin and casein and did not produce indole from tryptophan. The main phenotypic characteristics differentiating strains R30^T and strain tADL^T are shown in Table 1. More detailed results of phenotypic tests and nutritional features of strain R30^T and strain tADL^T are given in the species descriptions.

The major polar lipids of the two strains are PA (phosphatidic acid), PG (phosphatidylglycerol), PGP-Me

(phosphatidylglycerol phosphate methyl ester), PGS (phosphatidylglycerol sulfate) and one major glycolipid (GL) chromatographically identical to S-DGD-1 (sulfated mannosyl glucosyl diether). The 1D and 2D chromatograms of the lipids of the two strains were essentially identical (Supplementary Fig. S2), and similar to the polar lipid profiles of *Halonotius pteroides* 1.15.5^T (Supplementary Fig. S2).

Sixteen complete 16S rRNA gene sequences of strain R30^T and strain tADL^T were obtained (1474 and 1473 bp in length, respectively), and these indicated that each strain has one kind of 16S rRNA gene sequence. They share 97.4 % sequence identity and were most similar to the sequence of *Halonotius pteroides* 1.15.5^T (93.5 % and 92.4 %, respectively), with related genera showing lower values, e.g. *Halorubrum* (89 %), *Halogramum* (89 %) and *Haloferax* (89 %). Phylogenetic tree reconstructions using the neighbour-joining (NJ) algorithm revealed that strain R30^T and strain tADL^T tightly clustered with each other forming a distinct clade, separate from other recognized genera of the *Halobacteriaceae*. This clade regularly branched near *Halonotius pteroides* 1.15.5^T (Fig. 1a). Their phylogenetic position was also confirmed in other trees generated using the maximum-parsimony (MP) and maximum-likelihood (ML) algorithms (data not shown).

The 16S rRNA genes of isolates R30^T and tADL^T, and *Hnt. pteroides*, were examined for genus-specific signature bases (Kamekura et al. 2004), and the results are given in Table 2. *Hnt. pteroides* possesses several signature bases not shared by strains R30^T and tADL^T, while the latter strains share a signature base not found in *Hnt. pteroides*. These results are consistent with the two isolates being distinct from the genus *Halonotius*.

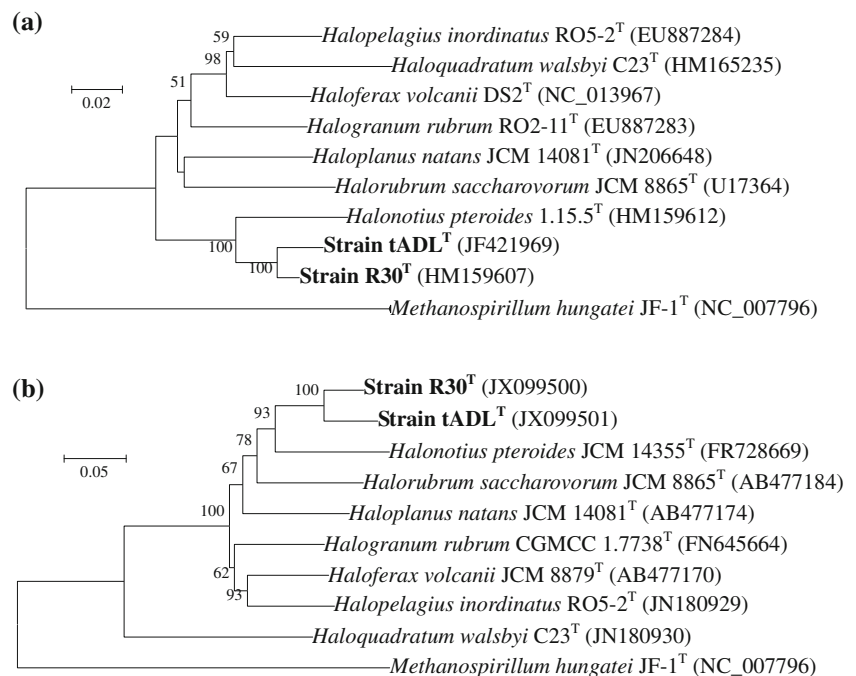
The *rpoB'* genes of both strains were sequenced and found to be identical in length 1827 bp, and the nucleotide sequences were 92.9 % similar to each other. The most closely similar sequence was the corresponding gene of *Halonotius pteroides* 1.15.5^T, but the level of similarity to the two isolates was much lower (85.5 and 84.5 %, respectively). In phylogenetic tree reconstructions using *rpoB'* gene sequences, strains R30^T and tADL^T clustered tightly with each other, forming a distinct clade, and like the 16S rRNA gene trees, this clade branched nearby *Halonotius pteroides* 1.15.5^T (Fig. 1b). The phylogenetic position was also confirmed in trees generated using the maximum-parsimony (MP) and maximum-likelihood (ML) algorithms (data not shown). The results of the *rpoB'* gene analyses supported the close similarity of strains R30^T and tADL^T. A recent taxonomic study of the *Halobacteriaceae* has proposed that a similarity value less than 86.2 % between *rpoB'* genes be used to distinguish genera (Minagishi et al. 2010), supporting the proposal that strains R30^T and tADL^T be placed outside the genus *Halonotius*.

Table 1 Phenotypic and other characteristics that distinguish *Halohasta* from closely related genera within the order *Halobacteriales*

Characteristic	<i>Halohasta</i>	<i>Halonotius</i>	<i>Halorubrum</i>	<i>Halobaculum</i>	<i>Haloferax</i>
Morphology	Rod	Pleomorphic	Pleomorphic	Rod	Pleomorphic
Cell size	0.4–0.6 × 1–6	0.7–1.5 × 2–6	0.12–1 × 0.5–7	0.5–1 × 5–10	0.4–3 × 0.5–3
Motility	+	+	±	±	±
NaCl optimum (g/l)	150–180	200–240	100–260	90–150	100–300
NaCl range (g/l)	120–280	158–350	30–260	60–150	60–300
pH optimum	7.0–7.5	Neutral	Neutral–9.5	6–7	5.5–10
Temperature optimum (°C)	30–40	45	31–50	40	32–53
Nitrite from nitrate	–	–	+	+	+
Acid from carbohydrate	+	–	±	+	±
Anaerobic growth on nitrate	–	–	–	–	±
Hydrolysis of starch	–	–	±	+	±
Indole production	–	–	±	–	±
Major glycolipids	S-DGD-1	S-DGD-1	S-DGD-3	S-DGD-1	S-DGD-1
G + C content (mol %)	62.4–62.9	58	62.7–72.1	70	60–64

+ Positive, – negative, ± positive or negative, *UG* unidentified glycolipid

Fig. 1 Neighbour-joining phylogenetic tree reconstructions based on 16S rRNA gene (a) and *rpoB'* gene (b) sequences, showing the relationships between strain R30^T, strain tADL^T and related members within the family *Halobacteriaceae*. Bootstrap values (%) are based on 1000 replicates and are shown for branches with more 50 % bootstrap support. Bar represents expected changes per site

**Table 2** Signature bases of 16S rRNA gene sequences

Species/isolates	<i>E. coli</i> positions (nt)	Surrounding sequence
<i>Hnt. pteroides</i>	65	UAGUCG A ACGAGU
	143	CUUCAG U CGGCAA
	557	GAUGUC C CAUAUU
	673	UCAGAG A GUACGU
	749	AGACGG C UUCGAC
	780	GGUCUC A AACCGG
	1270	CUGAGA A GCGACG
t-ADL ^T and R30 ^T	284	AAUAAU U GGUACG

The DNA G + C content of strains R30^T and tADL^T was 62.4 and 62.9 mol %, respectively. These values are significantly higher than that of *Halonotius pteroides* 1.15.5^T (58.4 mol %) (Burns et al. 2010). The DNA–DNA hybridization value between strain R30^T and strain tADL^T was 44 %, much lower than the accepted threshold value (70 %) to separate two species (Stackebrandt and Goebel 1994). The two strains showed only weak signals with *Halonotius pteroides* 1.15.5^T.

Based on these phenotypic, chemotaxonomic and phylogenetic properties, we believe these two isolates should

be accommodated in species within a novel genus. We propose the names *Halohasta litorea* gen. nov., sp. nov. and *Halohasta litchfieldiae* gen. nov., sp. nov. Characteristics that distinguish strains R30^T and tADL^T from each other are shown in Table 1. The significant differences between *Halohasta* and related genera of the *Halobacteriaceae* are provided in Table 2.

Description of *Halohasta* gen. nov.

Halohasta (Ha.lo.has'ta. Gr. n. hals halos, salt; L. fem. n. hasta, a rod; N.L. fem. n. *Halohasta*, rod-shaped cells living in saline conditions).

Cells are rods under optimal growth conditions and stain Gram-negative and are aerobic heterotrophs. Cells lyse in distilled water. Catalase test is positive, and the oxidase test may be positive or not. Extremely halophilic, with growth occurring in media containing 120–280 g/l NaCl; most strains grow best at 150–180 g/l NaCl. The optimum magnesium concentration is 47.5–85.5 g/l. Temperatures between 25 and 45 °C and pH between 6.0 and 8.5 may support growth. Sugars are metabolized, in some cases with the formation of acids. The polar lipids are PA (phosphatidic acid), PG (phosphatidylglycerol), PGP-Me (phosphatidylglycerol phosphate methyl ester), PGS (phosphatidylglycerol sulfate) and one major glycolipid chromatographically identical to S-DGD-1 (sulfated mannosyl glucosyl diether). The genomic DNA G + C content is between 62.4 and 62.9 mol %. Isolated from marine solar salterns. The type species is *Halohasta litorea*. Recommended three-letter abbreviation: *Hht*.

Description of *Halohasta litorea* sp. nov.

Halohasta litorea (li.to're.a. L. fem. adj. *litorea*, of or belonging to the sea-shore).

Cells are motile, rod-shaped (0.4–0.5 × 1–4 µm) under optimal growth conditions and stain Gram-negative. Colonies on agar plates containing 150 g/l NaCl are red, elevated and round. Chemoorganotrophic and aerobic. Growth occurs at 25–50 °C (optimum 40 °C), at 120–280 g/l NaCl (optimum 150 g/l), at 0–95 g/l MgCl₂ (optimum 66.5 g/l) and at pH 5.5–9.0 (optimum pH 7.0). Cells lyse in distilled water and the minimal NaCl concentration to prevent cell lysis is 120 g/l. Catalase- and oxidase-positive. Weakly grow under anaerobic conditions with arginine, but do not with nitrate or DMSO. Nitrate reduction to nitrite and formation of gas from nitrate are not observed. H₂S is produced from sodium thiosulfate. Indole formation is negative. Do not hydrolyze starch, gelatin, casein and Tween 80. The following substrates are utilized as single carbon and energy sources for growth: D-glucose, D-mannose, D-galactose, sucrose, lactose and pyruvate, DL-lactate,

succinate, L-malate and fumarate. The following substrates are utilized as single carbon, nitrogen or energy sources for growth: L-glutamate and L-arginine. No growth occurred on D-fructose, L-sorbose, D-ribose, D-xylose, maltose, starch, acetate, glycerol, D-mannitol, D-sorbitol, citrate, glycine, L-alanine, L-aspartate, L-lysine and L-ornithine. Acid is produced from D-glucose, D-mannose and D-galactose. Sensitive to the following antimicrobial compounds (µg per disc, unless otherwise indicated): bacitracin (0.04 IU per disc), rifampin (5) and nitrofurantoin (300). Resistant to the following antimicrobial compounds: novobiocin (30), trimethoprim (5), mycostatin (100), erythromycin (15), ampicillin (10), penicillin G (10 IU per disc), chloramphenicol (30), neomycin (30), ciprofloxacin (5), streptomycin (10), kanamycin (30), vancomycin (30), norfloxacin (10), tetracycline (30), gentamicin (10) and nalidixic acid (30). The polar lipids are PA (phosphatidic acid), PG (phosphatidylglycerol), PGP-Me (phosphatidylglycerol phosphate methyl ester), PGS (phosphatidylglycerol sulfate) and one major glycolipid chromatographically identical to S-DGD-1 (sulfated mannosyl glucosyl diether). The DNA G + C content of R30^T is 62.4 mol % (*T_m*).

The type strain is R30^T (=CGMCC 1.10593^T = JCM 17270^T), and was isolated from a marine solar saltern at Daliang, Liaoning Province, China.

Description of *Halohasta litchfieldiae* sp. nov.

Halohasta litchfieldiae (litch.fi.el.di'a.e. N.L. fem. n. *litchfieldiae*, of Litchfield, named after Carol D. Litchfield, a prominent microbial ecologist).

Cells are motile, rod-shaped (0.5–0.6 × 1–6 µm) under optimal growth conditions and stain Gram-negative. Colonies on agar plates containing 180 g/l NaCl are red, elevated and round. Chemoorganotrophic and aerobic. Growth occurs at 25–45 °C (optimum 30 °C), at 150–250 g/l NaCl (optimum 180 g/l), at 9.5–95 g/l MgCl₂ (optimum 47.5 g/l) and at pH 6.0–8.5 (optimum pH 7.5). Cells lyse in distilled water and the minimal NaCl concentration to prevent cell lysis is 150 g/l. Catalase-positive and oxidase-negative. Do not grow under anaerobic conditions with nitrate, arginine or DMSO. Nitrate reduction to nitrite and formation of gas from nitrate are not observed. H₂S is produced from sodium thiosulfate. Indole formation is negative. Do not hydrolyze starch, gelatin, casein and Tween 80. The following substrates are utilized as single carbon and energy sources for growth: D-glucose, maltose, sucrose, pyruvate, DL-lactate, L-malate, fumarate and citrate. The following substrates are utilized as single carbon, nitrogen or energy sources for growth: L-alanine and L-aspartate. No growth occurred on D-fructose, L-sorbose, D-ribose, D-xylose, lactose D-mannose, D-galactose, starch, acetate, glycerol, D-mannitol, D-sorbitol, succinate, glycine, L-lysine,

L-glutamate, L-arginine and L-ornithine. Acid is produced from D-glucose. Sensitive to the following antimicrobial compounds (μg per disc, unless otherwise indicated): novobiocin (30), bacitracin (0.04 IU per disc), rifampin (5) and nitrofurantoin (300). Resistant to the following antimicrobial compounds: trimethoprim (5), mycostatin (100), erythromycin (15), ampicillin (10), penicillin G (10 IU per disc), chloramphenicol (30), neomycin (30), ciprofloxacin (5), streptomycin (10), kanamycin (30), vancomycin (30), norfloxacin (10), tetracycline (30), gentamicin (10) and nalidixic acid (30). The polar lipids are PA (phosphatidic acid), PG (phosphatidylglycerol), PGP-Me (phosphatidylglycerol phosphate methyl ester), PGS (phosphatidylglycerol sulfate) and one major glycolipid chromatographically identical to S-DGD-1 (sulfated mannosyl glucosyl diether). The DNA G + C content of tADL^T is 62.9 mol % (T_m).

The type strain is tADL^T (= JCM 15066^T = DSMZ 22187^T), and was isolated from Deep Lake, Antarctica.

Acknowledgments This work was supported by the National Natural Science Foundation of China (No. 30970006), the opening project of State key Laboratory of Microbial Resources (No. SKLMR-20100604, Institute of Microbiology, Chinese Academy of Sciences) and a project funded by the Priority Academic Program Development of Jiangsu Higher Education Institutions (PAPD). Deep Lake water samples were kindly supplied by J. Hoffman (J. Craig Venter Inst., USA) and R. Cavicchioli (University of NSW, Sydney, Australia). M. D.-S. is grateful to D. Oesterhelt (Max-Planck Institute, Munich, Germany) for providing laboratory resources for part of this study. We thank Jean Euzéby (École National Vétérinaire, Toulouse, France) for his suggestion and advice regarding the formulation of genus and species names.

References

- Burns DG, Camakaris HM, Janssen PH, Dyll-Smith ML (2004) Combined use of cultivation-dependent and cultivation-independent methods indicates that members of most haloarchaeal groups in an Australian crystallizer pond are cultivable. *Appl Environ Microbiol* 70:5258–5265
- Burns DG, Janssen PH, Itoh T, Kamekura M, Echigo A, Dyll-Smith ML (2010) *Halonotius pteroides* gen. nov., sp. nov., an extremely halophilic archaeon recovered from a saltern crystallizer in southern Australia. *Int J Syst Evol Microbiol* 60:1196–1199
- Cui HL, Lin ZY, Dong Y, Zhou PJ, Liu SJ (2007) *Halorubrum litoreum* sp. nov., an extremely halophilic archaeon from a solar saltern. *Int J Syst Evol Microbiol* 57:2204–2206
- Cui HL, Zhou PJ, Oren A, Liu SJ (2009) Intraspecific polymorphism of 16S rRNA genes in two halophilic archaeal genera, *Haloarcula* and *Halomicrobium*. *Extremophiles* 13:31–37
- Cui HL, Gao X, Sun FF, Dong Y, Xu XW, Zhou YG, Liu HC, Oren A, Zhou PJ (2010a) *Halogramum rubrum* gen. nov., sp. nov., a halophilic archaeon isolated from a marine solar saltern. *Int J Syst Evol Microbiol* 60:1366–1371
- Cui HL, Gao X, Yang X, Xu XW (2010b) *Halorussus rarus* gen. nov., sp. nov., a new member of the family *Halobacteriaceae* isolated from a marine solar saltern. *Extremophiles* 14:493–499
- Cui HL, Gao X, Yang X, Xu XW (2011a) *Halolamina pelagica* gen. nov., sp. nov., a new member of the family *Halobacteriaceae*. *Int J Syst Evol Microbiol* 61:1617–1621
- Cui HL, Yang X, Mou YZ (2011b) *Salinarchaeum laminariae* gen. nov., sp. nov.: a new member of the family *Halobacteriaceae* isolated from salted brown alga *Laminaria*. *Extremophiles* 15:625–631
- Cui HL, Mou YZ, Yang X, Zhou YG, Liu HC, Zhou PJ (2012) *Halorubellus salinus* gen. nov., sp. nov. and *Halorubellus litoreus* sp. nov., novel halophilic archaea isolated from a marine solar saltern. *Syst Appl Microbiol* 35:30–34
- De Ley J, Cattoir H, Reynaerts A (1970) The quantitative measurement of DNA hybridization from renaturation rates. *Eur J Biochem* 12:133–142
- Dussault HP (1955) An improved technique for staining red halophilic bacteria. *J Bacteriol* 70:484–485
- Dyall-Smith ML (2009) The Halohandbook: protocols for haloarchaeal genetics. <http://www.haloarchaea.com/resources/halohandbook>
- Gonzalez C, Gutierrez C, Ramirez C (1978) *Halobacterium vallis-mortis* sp. nov. an amylolytic and carbohydrate-metabolizing, extremely halophilic bacterium. *Can J Microbiol* 24:710–715
- Gutiérrez C, González C (1972) Method for simultaneous detection of proteinase and esterase activities in extremely halophilic bacteria. *Appl Microbiol* 24:516–517
- Gutiérrez MC, Castillo AM, Kamekura M, Ventosa A (2008) *Haloterrigena salina* sp. nov., an extremely halophilic archaeon isolated from a salt lake. *Int J Syst Evol Microbiol* 58:2880–2884
- HuB VAR, Festl H, Schleifer KH (1983) Studies on the spectrophotometric determination of DNA hybridization from renaturation rates. *Syst Appl Microbiol* 4:184–192
- Kamekura M, Mizuki T, Usami R, Yoshida Y, Horikoshi K, Vreeland RH (2004) The potential use of signature bases from 16S rRNA gene sequences to aid the assignment of microbial strains to genera of halobacteria. In: Ventosa A (ed) *Halophilic microorganisms*. Springer, Heidelberg, pp 77–87
- Makhdoumi-Kakhki A, Amoozegar MA, Bagheri M, Ramezani M, Ventosa A (2012a) *Haloarchaeobius iranensis* gen. nov., sp. nov., an extremely halophilic archaeon isolated from the saline lake Aran-Bidgol. *Iran Int J Syst Evol Microbiol* 62:1021–1026
- Makhdoumi-Kakhki A, Amoozegar MA, Ventosa A (2012b) *Halo-venus aranensis* gen. nov., sp. nov., a novel extremely halophilic archaeon from Aran-Bidgol salt lake. *Iran Int J Syst Evol Microbiol* 62:1331–1336
- Marmur J, Doty P (1962) Determination of the base composition of deoxyribonucleic acid from its thermal denaturation temperature. *J Mol Biol* 5:109–118
- McDade JJ, Weaver RH (1959) Rapid methods for the detection of gelatin hydrolysis. *J Bacteriol* 77:60–64
- Minegishi H, Kamekura M, Itoh T, Echigo A, Usami R, Hashimoto T (2010) Further refinement of *Halobacteriaceae* phylogeny based on the full-length RNA polymerase subunit B' (*rpoB'*) gene. *Int J Syst Evol Microbiol* 60:2398–2408
- Oren A (2006) The order Halobacteriales. In: Dworkin M, Falkow S, Rosenberg E, Schleifer KH, Stackebrandt E (eds) *The prokaryotes*, vol 3, 3rd edn. Springer, New York, pp 113–164
- Oren A, Ventosa A, Grant WD (1997) Proposed minimal standards for description of new taxa in the order *Halobacteriales*. *Int J Syst Bacteriol* 47:233–238
- Owen RJ, Pitcher D (1985) Current methods for estimating DNA base composition and levels of DNA–DNA hybridization. In: Goodfellow M, Minnikin DE (eds) *Chemical methods in bacterial systematics*. Academic Press, London, pp 67–93
- Stackebrandt E, Goebel BM (1994) Taxonomic note: a place for DNA–DNA reassociation and 16S rRNA sequence analysis in

the present species definition in bacteriology. *Int J Syst Bacteriol* 44:846–849

Tamura K, Peterson D, Peterson N, Stecher G, Nei M, Kumar S (2011) MEGA5: molecular evolutionary genetics analysis using

maximum likelihood, evolutionary distance, and maximum parsimony methods. *Mol Biol Evol* 28:2731–2739